



GAT MONTHLY MEMBERSHIP PROGRESS REPORT

Results as of: 5/31/2024

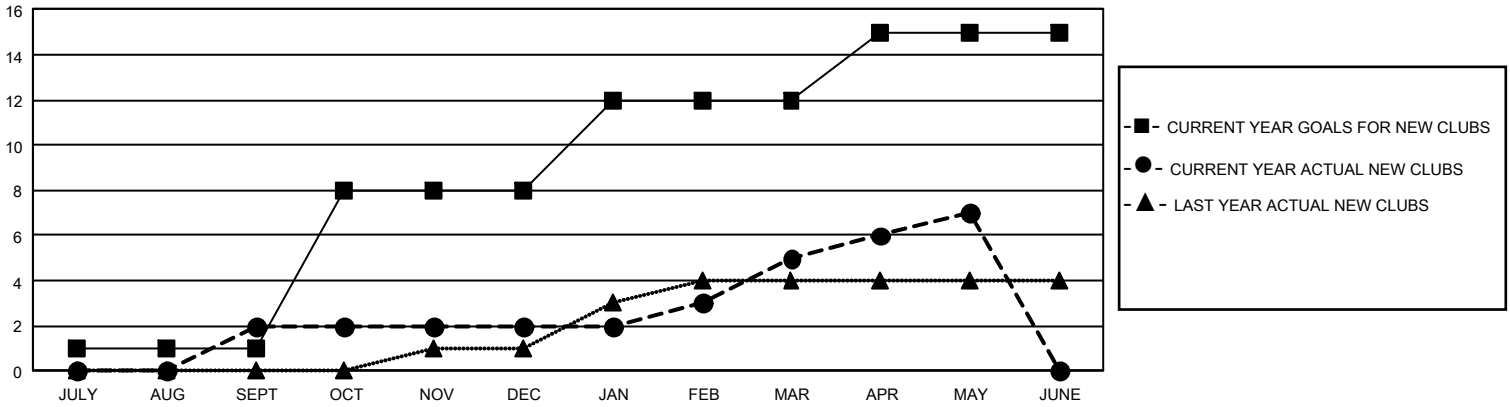
GMT Constitutional Area 5 - J, Group I

REPORT DOES NOT INCLUDE CLUBS IN UNDISTRICTED AREAS.

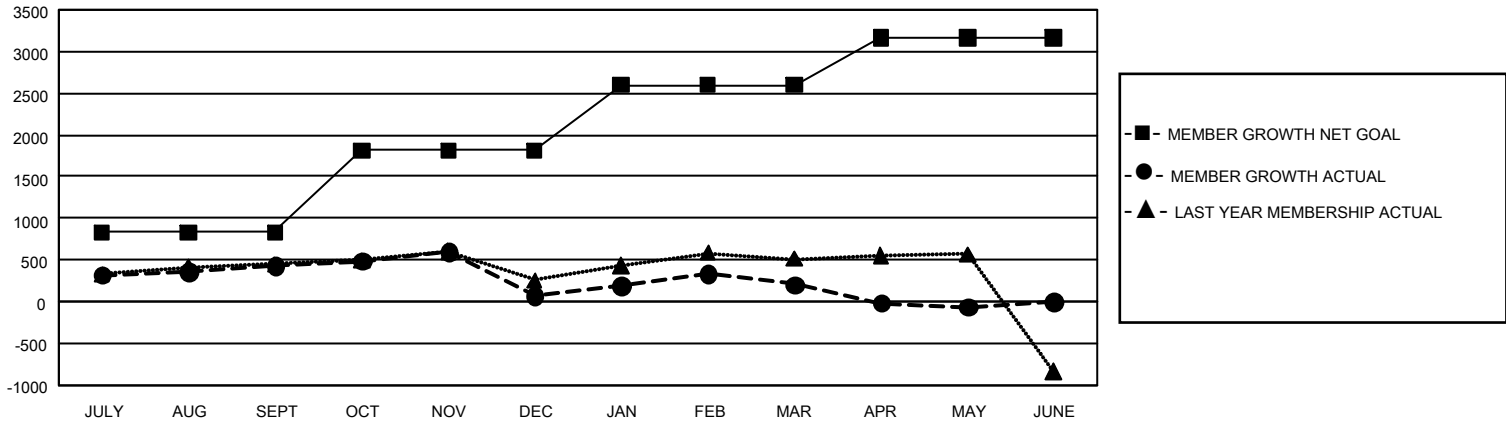
Clubs			
RESULTS FOR 2023-2024			
QUARTER	NEW CLUB GOAL	NEW CLUBS	DROPPED CLUBS
JULY/AUG/SEPT	3	2	3
OCT/NOV/DEC	21	0	5
JAN/FEB/MAR	12	3	0
APR/MAY/JUNE	9	2	7

Members			
RESULTS FOR 2023-2024			
QUARTER	MEMBER GROWTH NET GOAL	MEMBER GROWTH ACTUAL	DROPPED MEMBERS ACTUAL (including transfers)
JULY/AUG/SEPT	830	1,214	702
OCT/NOV/DEC	981	593	928
JAN/FEB/MAR	785	934	741
APR/MAY/JUNE	571	579	830

GOALS AND ACTUAL NEW CLUBS CUMULATIVE



GOALS AND ACTUAL MEMBERS CUMULATIVE



DROPPED CLUBS: 15	859 CLUBS OF 1,126 ADDED 1 OR MORE NEW MEMBERS	GENDER DISTRIBUTION	
		MALE 30,823 (78.24%) FEMALE 8,566 (21.74%) NON BINARY 0 (0.00%) PREFER NOT TO ANSWER 6 (0.02%)	
DROPPED MEMBERS		CLICK HERE FOR CUMULATIVE MEMBERSHIP DATA	TOTAL FAMILY UNIT MEMBERS 9,872
DECEASED 297 CLUB CANCELLED 4 OTHER 2,882 TOTAL 3,183	FAMILY MEMBERS PAYING HALF DUES 5,474		